

套袋机

Baling and Bagging Machines

适用范围

专门用于刨花, 苜蓿草等生物垫料, 以及布料, 废旧棉纱, 纤维等边角料的压缩套袋, 广泛用于实验室, 宠物垫材料加工, 二手服装回收厂等。

Usage

Specialized designed for baling and bagging wood shavings/chips, alfalfa, waste fabric, cotton yarn and textile scraps etc. Widely used by laboratories, the pets bedding materials plants, clothes recycling plants etc.

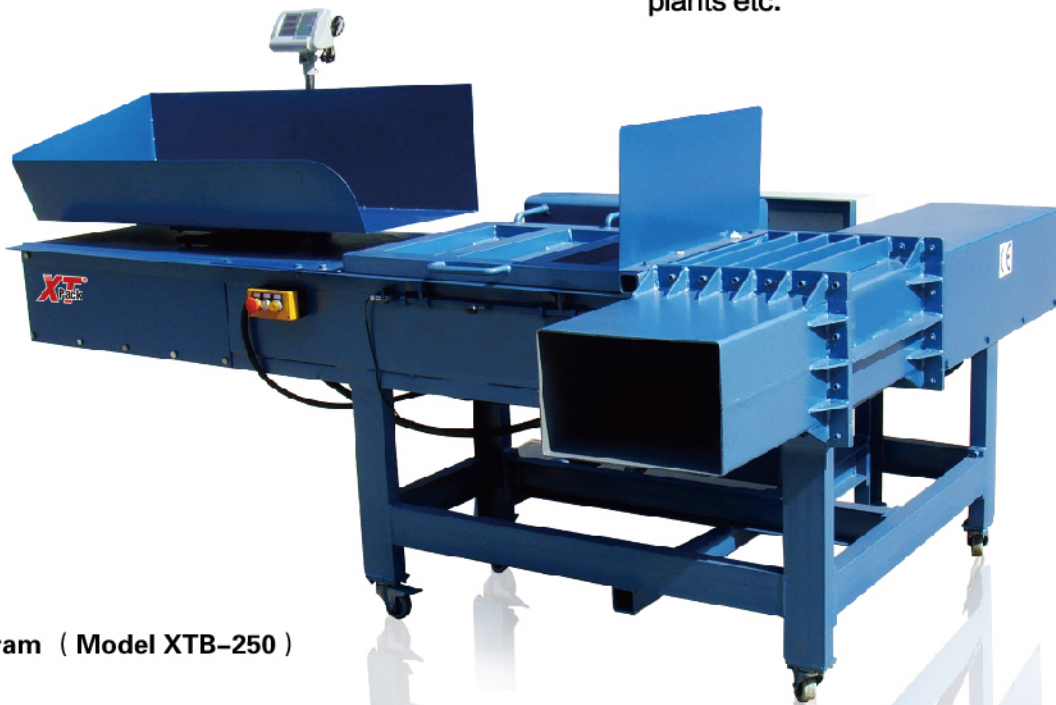
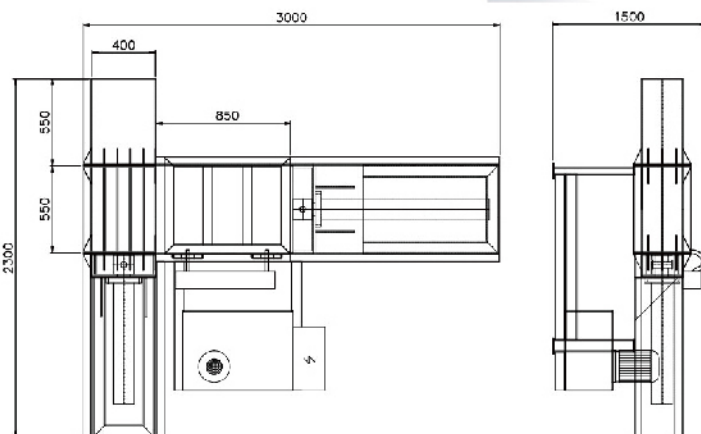
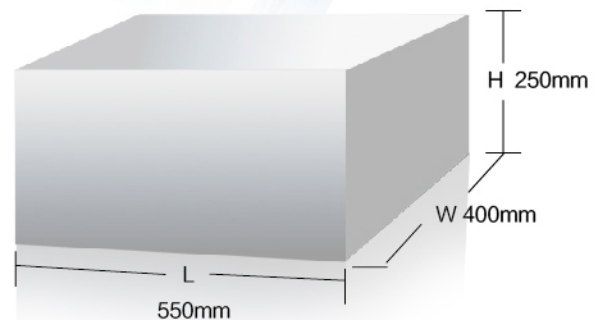


Diagram (Model XTB-250)



Bale Size (Model XTB-250)



参数 Specifications

型号	XTB-100	XTB-200	XTB-250	XTB-300
加料口尺寸(L*H) Feed opening size (L*H)	500*300mm	850*550mm	1000*550mm	1200*600mm
压缩腔尺寸(L*W*H) Baling Chamber size(L*W*H)	570*300*200mm	1230*550*200mm	1400*550*250mm	1600*600*250mm
包块尺寸 (L*W*H, H可调) Bale size(L*W*H)	300*90*200mm	550*380*200mm	550*400*250mm	600*450*250mm
包块重量 Bale weight	1kgs(sawdust)	20kgs(fabric)	25kgs(fabric)	30kgs(fabric)
功率 Power	5.5kw	7.5kw	7.5kw	11kw
机器重量 Machine weight	850kgs	1000kgs	1100kgs	1200kgs
机器外观尺寸 Machine overall dimension	1600*1300*1500mm	2600*2200*1500mm	3000*2300*1500mm	3500*2500*1500mm

机器特点

- 自带称重装置，确保每个包块的重量一致
- 一键式操作，方便快捷
- 一次加料完成，提高工作效率
- 日本欧姆龙PLC控制，安全联锁，质量更可靠

Features

- Equipped with weighing device, ensures uniform bale weight
- Only one press button required for the whole pressing and ejecting system, for conveniently operation
- One time material feeding, improves the working efficiency
- Equipped with Omron brand of PLC, makes sure safety interlock

